

SEKONIC

light meters for photo/video/cinematography

L-758 SERIES DIGITALMASTER | L-478 SERIES LITEMASTER PRO | L-308DC DIGICINEMATE
L-308S FLASHMATE | L-389A STUDIO DELUXE III | L-208 TWINMATE | i-346 ILLUMINOMETER

www.sekonic.com

Photo Meters
CINE Meters
Illuminometers



For over 60 years, Sekonic Corporation has designed and manufactured the most innovative and sophisticated light measuring instruments in the photographic and Cine/Video industry. Our commitment to meet and exceed the demands of the professional and their expectations continues with a vigorous passion.

From our humble beginnings, it all started on June 16th, 1951, when Mr. Ryuichi Mitani, a young man at the time, established "Seiko Electronic Co. Ltd" an engineering, manufacturing and design company for exposure meters and selenium purification systems. That same year the company released their first exposure meter, the L-1 under the brand name of Sekonic. By 1960 the Sekonic brand meters became so popular that the company changed the name from Seiko Electronic Co. Ltd to Sekonic Corporation, a true testament that Sekonic meters were destined for success.

The company grew over the years and in 1963 it was listed on the Tokyo Stock Exchange. Sekonic's detail to precision engineering and business expertise in the electronics business landed them many notable OEM clients such as Copal and Konica. In 1974 Sekonic received the "Good Design" award from the Ministry of International Trade and Industry in Japan for the L-428 System Meter. Sekonic would later be honored with this prestigious award again in 1994 for the L-308B Flashmate. During the years to follow, Sekonic diversified into other markets such as Industrial Recorders, Plotters, Optical Mark Readers and other various measuring instruments.

In 1984 Sekonic received worldwide recognition when NASA chose the L-518 DigiPro X-1 for the Space Shuttle missions. As the first Shuttle launched, so did the future of Sekonic light meters, with popular models such as the L-408 Multi Master in 1995, and L-508 Zoom Master in 1997. As the new millennium started, Sekonic released the world's first radio triggering light meters (L-358 Flash Master and L-608 Super Zoom Master) compatible with PocketWizard, that offered wireless triggering and measuring of remote flash equipment in addition to other features.

As the photo industry evolved into digital capture technology, Sekonic demonstrated its' commitment to the needs of the professional photographer. Starting with the L-558 DualMaster and then the L-308S Flashmate, Sekonic began to release digital ready light meters. However, in 2006 Sekonic completely reinvented the meaning of a light meter with the world's first digital "Exposure Profiling" solution, the L-758 Series DigitalMaster. The L-758 Series continues today to lead the product line and remains unchallenged in the industry by offering photographers a hardware/software package that ensures perfect digital exposure control. It is the first truly digital-ready light meter with tons of cool features and has earned the nickname, the ultimate "Multi Tool". With the L-758 Series off the drawing board, Sekonic engineers fueled with excitement, set off to break another digital milestone. In 2008 the world's first digital ready color meter with wireless triggering built-in was born, the C-500 series ProDigi Color.

In recent times, Sekonic has seen the merge of still and moving images, and Sekonic was there with products such as the L-308DC DigiCineMate launched in 2010. In 2012, with the astounding penetration of smart phone touch screen technology, Sekonic re-energized the concept of a light meter by creating the L-478 Series LiteMaster Pro. Breaking all the barriers, Sekonic created the world's first color touch screen, wireless power control & triggering ready exposure profiling light meter. Its compact and intuitive design offers today's shooters with everything they need at the touch of a finger. Today Sekonic continues to bring innovative new products to professional photographers and CINE/Videoographer's.

Sekonic.....because it's all about controlling the light.

SEKONIC

WORLD'S FIRST COLOR TOUCH SCREEN LIGHT METER WITH POWER CONTROL AND EXPOSURE PROFILE

Creative image makers, still or motion, have known for generations that light and the ability to control it has always been the key to capturing the essence of still or moving images. Today's sophisticated cameras and lighting equipment offer more control and creative possibilities than ever before. To compliment these advances in the photographic, cine and video worlds, Sekonic offers the most innovative and advanced light-measuring instrument in the industry.

Seven Meters in One

How do you tell the story?

With still images...

The L-478-series takes the mystery out of mixing ambient light and flash. Select the measurement mode that fits your shooting style with just the touch of your fingertip. Measure the brightness of a single light source or the exposure for the entire scene. Measure flash with cord or cordless mode or trigger your flash units wirelessly with the built-in radio transmitter (L-478DR only). Rest assured that every measurement is backed with the most accurate readings via Sekonic's Exposure Profiling System that matches and compensates for your DSLR exposure characteristics.

- ✓ Flash Meter
- ✓ Ambient Meter
- ✓ Incident Meter
- ✓ Reflected 5 degree spot meter (with optional viewfinder attachment)

With moving images...

The L-478 series has motion capture modes accomodating today's sophisticated video and CINE camera systems. With the touch of your finger, select the shutter speeds, frame rates and shutter angles for your camera. Create unique frame rates and shutter angles for special effects. For quick and creative shoots, select your favorite custom stored compensation filter or gel pack. Via Sekonic's Exposure Profiling System, every measurement is accurate and precise.

- ✓ HD Cine Meter
- ✓ Cine Meter
- ✓ Illuminance/Luminance Meter



Pressure sensitive 2.7" large color LCD Screen with tap or scroll interface. Adjustable color brightness for fast, more intuitive, better interactive control.



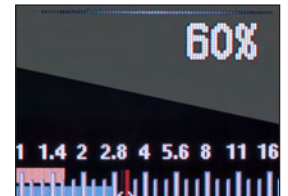
Programmable to match the exposure characteristics of your DSLR or Cine camera. Match the response of film or digital exposure characteristics, dynamic range, reflected, incident, flash or ambient light throughout the ISO range of your camera, using Data Transfer Software.



PocketWizard Wireless Triggering built in (L-478DR only). Triggers in Standard and ControlTL channels plus power control mode.



The world's first meter to offer HD/CINE and CINE mode with features such as: frame rate, shutter angle, lux, foot-candle, cd/m2 and foot-lambert.



Measure ambient and flash output simultaneously. Displays ambient/flash ratio in two separate ways: on a graphic color bar, as a percentage of flash. In addition, total exposure is shown in f/stop.

LITEMASTER PRO L-478D/DR

Flash Analyzing Function

The L-478-series meters offer a quick and easy way to balance flash and ambient light with one press of the measuring button. That's because they measure ambient and flash simultaneously and automatically indicate the percentage of flash in the total exposure. Touch the screen to adjust settings to get the perfect ambient to flash ratio. The meter's analog display uses color bars to graphically display the relationship between the ambient and flash levels.



20% Flash



50% Flash



80% Flash

Percentage of flash



Ambient component (orange)

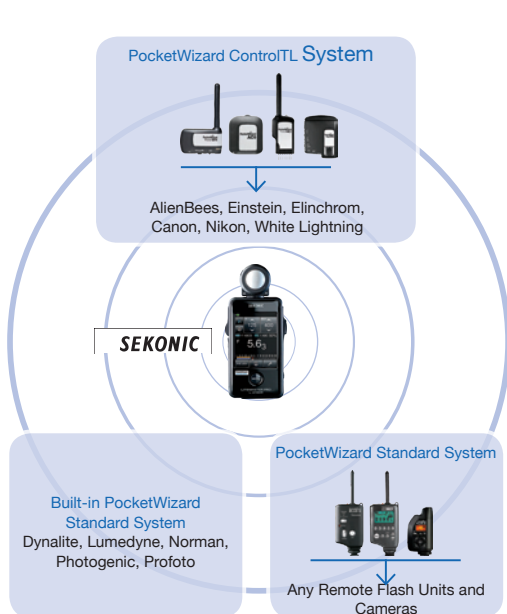
Flash component (blue)

Wireless Triggering Built-In (L-478DR only)

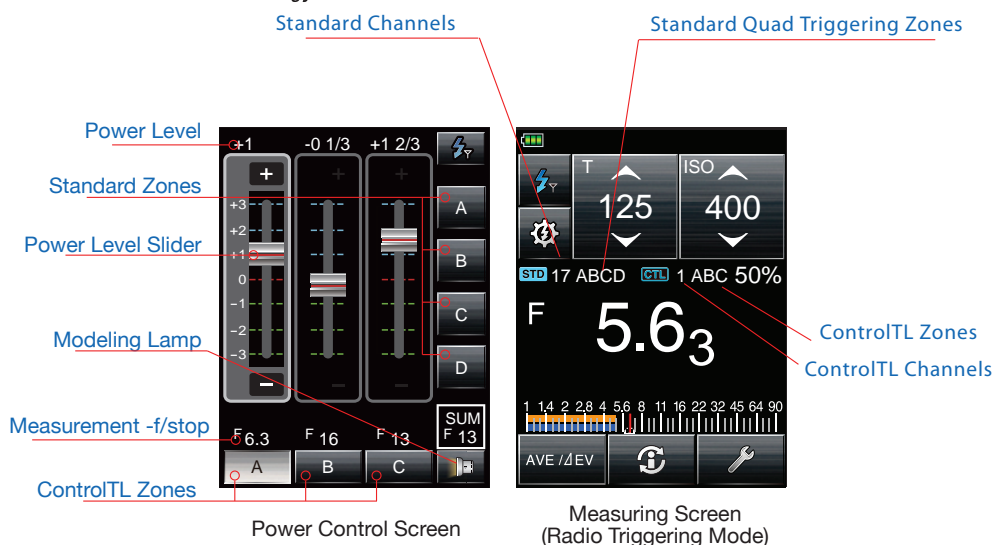
The L-478DR has a built-in wireless triggering system that offers a cordless solution for triggering any flash unit with a PocketWizard connected and measuring them at the same time. The L-478DR offers many of the features available to wireless shooters including selective zone triggering, multi-channel selection and even camera triggering. The L-478DR is a part of a growing family of PocketWizard compatibly wireless photo gear.

Flash Power Control (L-478DR only)

The Sekonic L-478DR features remote flash power control of up to three separate zones of lighting. Utilizing PocketWizard ControlTL technology, changing flash power output is as easy as sliding your finger tip on an intuitive touch screen slider. Change the power settings on your Nikon or Canon Speedlights mounted on PocketWizard FlexTT5 transceivers or select studio flash units connected to ControlTL receivers. Switch Zones on or off to measure remote flash units separately for precise lighting ratios scenario.



PocketWizard® Wireless Technology



Digital Exposure Control - Camera Calibration

Because every digital camera, lens, and software is unique in its ability to capture and process light they can produce differences in the Tonal Range (dynamic range) and exposure of an image. Knowing the limits of your camera's ability to make better exposures with less post-processing ensures you'll get what you see.

Sekonic's pioneering Data Transfer Software enables quick dynamic range mapping and camera/meter calibration for the most precise control of light. Create and store up to ten camera exposure profiles with Sekonic or X-Rite brand calibration targets. Sekonic or X-Rite brand targets or use the touch display to directly enter profile information obtained from other sources. See page 10 for full explanation on the Data Transfer Software.

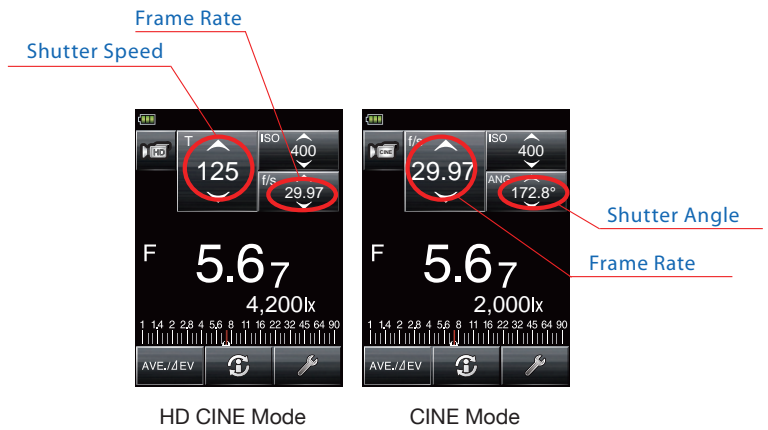
Radio Frequency and Compatibility

The PocketWizard triggering systems use different frequencies (FCC/IC and CE) in accordance with laws and regulations of the countries where they are marketed. Before purchasing a product using the PocketWizard system, be sure it is compatible with local regulations and the other PocketWizard products you use.

Wireless radio triggering function is built-in L-478DR only. No optional radio module for L-478D.

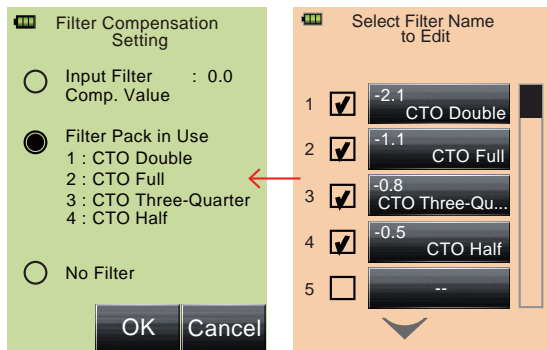
Enhanced HD Cine / Cine Features

Today's digital cameras offer both still and motion capture. Offering shooters seamless cross platform media capabilities, these cameras provide a variety of uses in a single production. To complement this sophisticated cameras, the L-478 series has two motion capture modes in addition to still capture to accommodate any shoot. Touch to set shutter speeds and frame rates for HD-Cine cameras or quickly select frame rates and shutter angles for Cine cameras. Creating unique frame rates and shutter angles for special effects is just a finger tip touch away.



Infinite Frame Rate/ Shutter Angle

Special effects and light sources can push standard camera settings to their limits. That's why the L-478 series also allows creating unique frame rates and shutter angles to .000 to enable precise exposure and lighting, producing the very best images and reducing time in post-production.



Filter Compensation Selection in Tool Box

Edit Filter in Menu

Unique Filtration Compensation Mode

Like all light and exposure meters, the L-478 series are calibrated for visual light. Because meters can't measure filtered light by design, Sekonic designers added a unique Filter mode that enables getting exact light levels with touch screen ease. Touch the L-478 series to instantly call up light-source or camera filtration expressed in industry standard terms. For special filters or applications, create a unique filter factor and give it a name. Up to four filters can be used together as a pack to assure full control in virtually any situation.



Brightness along with exposure

Brightness alone (Lux mode)

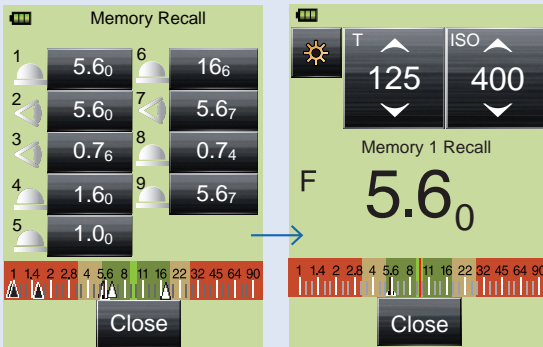
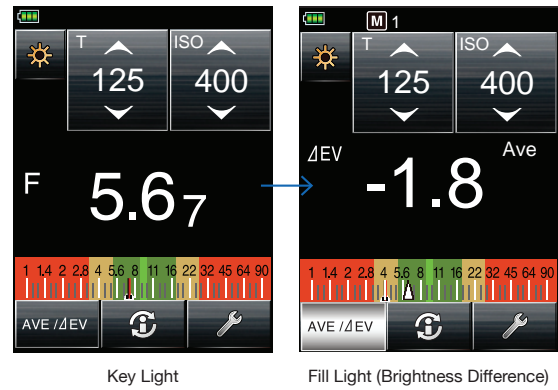
Illuminance or Luminance Measurement

Brightness measurements in Lux or FC (Foot Candles) and Cd/m2 or FL (Foot Lambert) with optional 5 degree-viewfinder position the L-478 series as a major player on movie sets around the world. It can display brightness along with exposure measurements or just brightness alone.

LITEMASTER PRO L-478D/DR

Contrast Function

The L-478 series continuous measurement mode provides a contrast range measurement to evaluate the overall lighting conditions. In addition, you can also check lighting ratios or the evenness of an illuminated background, scene or light source. Changes in the measured values are related to a saved measurement such as the center of a background or key light by pressing AVE/ΔEV icon.



Memory Mode and Latitude Display

The L-478 series can store up to nine measurements for recall. An indicator appears on the analog display each time a measurement stored. This provides a fast and simple way of retaining and analyzing shadow, mid tone and highlight exposure measurements. Digital readings can be recalled and/or cleared at any time for precise exposure control.

The dynamic range of your digital camera or film can be programmed into the L-478 Series to create a Latitude Display that mirrors the range of your camera system.

Additional Features

- ✓ Swivel measuring head. (pic 1)
- ✓ Reflected light metering: with optional 5-degree spot attachment. (pic 2)
- ✓ USB upgradeable via Data Transfer Software (in CD-ROM included). (pic 3).
- ✓ PC connector. (pic 4).
- ✓ Retractable Lumishpere. (pic 5)
- ✓ Two convenient AAA dry cell or rechargeable batteries can be used as the power source. (pic 6).

Custom Settings to Accommodate Your Personal Preferences:

- ✓ Increments of T + F
- ✓ Display of 1/10 Step Increments
- ✓ Compensation +/- Preference
- ✓ Switching Measure Memory Buttons
- ✓ Ambient Mode
- ✓ Flash Mode
- ✓ Additional Data
- ✓ Illuminance / Luminance Unit
- ✓ Illuminance / Luminance Individual Display
- ✓ Color Theme
- ✓ Auto Power Off
- ✓ Backlight Brightness
- ✓ Auto Dimmer



pic 1



pic 2



pic 3



pic 4



pic 5



pic 6

THE WORLD'S FIRST MULTI-FUNCTION LIGHT METER WITH EXPOSURE PROFILING & WIRELESS TRIGGERING.

The DIGITALMASTER L-758 Series was designed from its inception to offer digital and film shooter with repeatable precision, accurate measurement and digital exposure control that is necessary for demanding photo or video/cine situations. It offers cutting edge features never before available in any light meter and redefines what a light meter is and why it's a critical tool for digital exposure control. From its unique 1° Optical Spot viewfinder with EL internal display to its water resistant housing, Cine mode, wireless control and Custom settings (14 items for L-758D/DR and 17 items for L-758CINE), it has earned its nickname as the ultimate "Multi Tool".

Ultimate Digital Exposure Control

How do you tell the story?

With still images...

How much highlight or shadow details are you really getting in your digital exposures? Stop wondering. With the world's first exposure profiling light meter, you'll know before you take the shot. The L-758 series is a perfect blend of advanced features and precision exposure control. Utilizing its optical 1° Spot metering along with Sekonic's Exposure Profiling calibration system, the L-758 learns how your D-SLR responds to lighting and alerts you if you've exceeded your camera limitations.

In addition, the L-758 series measures flash with cord or cordless mode or triggers flash units wirelessly with PocketWizard compatible radio transmitter (built-in L-758DR, and optional with L-758D/CINE). On location the L-758's water resistant housing, EL illuminated internal viewfinder, auto backlit main screen and responsive jog wheel offers effortless handling.

- ✓ 1° Spot Viewfinder with illuminated display
- ✓ Exposure Profiling
- ✓ Wireless Triggering (built-in L-758DR, optional with L-758D/CINE)
- ✓ Flash Analyzing
- ✓ All Weather Design

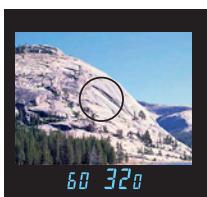


With moving images...

For many shooters today, one camera has to do it all. That's why the L-758 offers extensive Cine mode features all in the palm of your hand. From its full information Spot Viewfinder to its Illuminance / Luminance measuring modes, it's no wonder the L-758 series is the serious still and Cine shooters choice.

It all starts with the light sensor. In incident mode the L-758 offers a retractable lumisphere for a narrow field of measurement, while in the extended position it measures a wider field. For pinpoint measurements, the 1° reflected Spot meter offers accurate readings in the fringes of highlights and the shadows of darkness. With its extensive frame rates and shutter angle settings, it provides the cinematographer and videographer the ultimate in creative and special effects lighting control.

- ✓ Illuminance/Luminance (FC, LUX, FL, cd/m2,)
- ✓ Wide Range of Frame Rates
- ✓ Filter Factor Compensation
- ✓ Shutter Angle



The rectangular 1° Optical Spot viewfinder displays f-stop, shutter speed, percentage of flash and much more with an EL digital display.



Programmable to match the exposure characteristics of your DSLR or Cine camera. Match the response of film or digital exposure characteristics, dynamic range, reflected, incident, flash or ambient light throughout the ISO range of your camera, using data transfer software.



Pocket Wizard Wireless Triggering built in (L-758DR ONLY, optional with L-758D/CINE). Triggers in Standard and ControlTL channels.



The L-758CINE (Only) offers frame rate, shutter angle, and lx, cd/m2, fc, fl.



All Weather Design. All buttons, switches and compartments are sealed and the housing has been design to endure rugged outdoor conditions.

DIGITALMASTER L-758series

The Only light meters that show you the Dynamic Range of your D-SLR.
1 Degree Spot with Digital Display:

The rectangular 1° spot viewfinder displays f-stops, shutter speed, percentage of flash and much more with an EL (Electronic-Luminescent) digital display. It incorporates a parallax-free spot finder preventing erroneous close-up photography light measurements. It can instantly be switched from incident to spot measurement mode. With its super sensitive sensor, the L-758 series can measure the reflected flash output down to an amazing f/2.0 and ambient measurements as low as EV1. In addition, it also included an adjustable diopter eyepiece.



Exposure Profiling:

Up to three digital camera exposure profiles can be stored and recalled. Once selected, the L-758 series can recall an exposure profile (from a digital or film camera) and display the dynamic range and clipping point on the aperture scale or EV scale. Any compensation value that is required to match the camera sensitivity is loaded into the appropriate measuring mode and automatically applied to all measurement's.



Wireless Radio Triggering Mode:

The L-758DR includes a built-in PocketWizard wireless triggering transmitter (optional for L-758D/758CINE), which wirelessly triggers electronic flash units from up to 100 feet (30 meters) away and measures the light output simultaneously. No more tripping over synch cords or fumbling with PC connectors.

Compatible with all PocketWizard receivers and transceivers including ControlTL radios. You can also select through the meter's software, "Standard" or "ControlTL" mode, which flash zone you want to trigger and measure. Individual measurements of several flash units wirelessly with the touch of the measure button provides quick and easy lighting setups and exposure settings. In addition, it is possible to trigger a camera connected to a PocketWizard radio.

The built-in transmitter is compatible with PocketWizard radio triggering systems, as well as the PocketWizard Wireless Freedom partners (Select Bowens, Dyna-lite, Lumedyne, Norman, Photogenic, Profoto and White lighting with built-in PocketWizard radio technology).

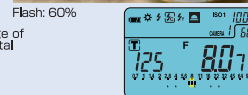
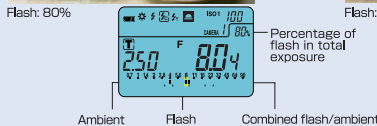
The Wireless Radio Triggering Mode offers 32 digital coded channels (1-32) and four Quad-Triggering Zones, in addition to ControlTL channels and Tri-Triggering Zones.



Flash Analyzing Functions:

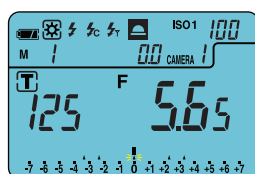
In all flash modes, the L-758 series simultaneously reads both flash and ambient light automatically in order to analyze and display the exposure data in 3 convenient ways:

- Combined readings of flash and ambient
- Percentage of flash in the total exposure
- Simultaneous display of flash, ambient and combined readings on the analog scale.

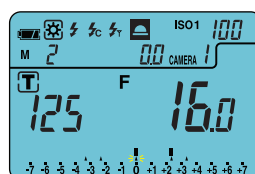


Memorize Up To Nine Readings and Mid-Tone Adjustment

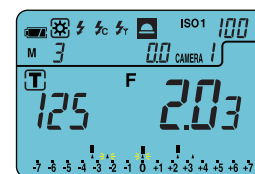
The L-758 Series can memorize measured values in both incident and reflected modes independently or combined. When the memorized values are combined it is possible to take a mid-tone measurement using the Lumisphere in incident mode, then take a spot highlight, and shadow measurement by simply switching to reflected measuring mode. Highlight and shadow tones can be measured and quickly viewed to determine if there are within the Dynamic range or Clipping points of the digital camera or type of film being used. In addition, the Mid.Tone value can be shifted to adjust the highlight or shadow to be within the range required.



Mid.Tone F5.65



Measure and memorize the Highlight F1.60



Measure and memorize the Shadow F2.03

Custom Settings:

The Custom Setting mode provides a quick and easy setup of individual meter preferences. Once your preferences are set they are automatically applied until you change them. The L-758DR/D have 14 custom settings and the L-758CINE has 17 settings.

L-758 series custom settings

- ✓ ISO2 setting
- ✓ Exposure Compensation Display
- ✓ Increments of Shutter Speed and Aperture
- ✓ Exposure Priority Settings
- ✓ EV Mode
- ✓ Multiple Flash Mode
- ✓ Dynamic Range/Clipping Point Icons
- ✓ Standard Value if Mid. Tone Memory is not set
- ✓ Average
- ✓ Auto Save On Power Off
- ✓ Auto Power Off Time
- ✓ Jog Wheel Function
- ✓ Compensation Preference
- ✓ Switching Measuring/Memory Buttons



L-758CINE series custom settings

- ✓ Illumination of Luminance Display
- ✓ Illuminance Measurement in Incident Mode
- ✓ Luminance Measurement in Reflected Mode

CINE Mode: (L-758CINE Only)

The L-758CINE meters included all the latest digital video camera features and settings. It provides the most extensive range of frame rate and shutter angle available in a multi-function light meter. With its camera profiling capability and super accurate 1 deg. Spot metering it's the Cinematographer and Videographer's ultimate light measuring tool. In addition, it also offers Lux, Foot-candle, cd/m2, and Foot-lambert measuring modes.

- ✓ Illumination of Luminance Display
- ✓ Illuminance Measurement in Incident Mode
- ✓ Luminance Measurement in Reflected Mode

All Weather Design

All buttons, switches and compartments are sealed and the housing has been design to endure rugged outdoor conditions. Ideal for on-location shooting, at the beach, in the rainy or in humid environments. Dust-proof and splash-proof (JIS Standard Water Resistance Class 4)



Which meter is right for me?

The Custom Setting mode provides a quick and easy setup of individual meter preferences. Once your preferences are set they are automatically applied until you change them. The L-758DR/D have 14 custom settings and the L-758CINE has 17 settings.

Other Functions:

- ✓ EV scale independently
- ✓ Average
- ✓ Multiple Flash (Cumulative)
- ✓ Aperture Priority
- ✓ Shutter Speed Priority
- ✓ EV (Exposure Value)
- ✓ All Weather Design
- ✓ Auto Back Light
- ✓ Retractable Lumisphere
- ✓ Exposure Compensation in Incident and Reflected
- ✓ Dual ISO (ISO1 and ISO2)
- ✓ Auto Power Off
- ✓ Battery Indicator
- ✓ CINE speed (f/s)
- ✓ Tripod Thread
- ✓ Diopter Adjustment
- ✓ Jog Wheel Lock



L-758DR is designed for demanding photographic situation with PocketWizard transmitter built-in-automatically applied until you change them. The L-758DR/D have 14 custom settings and the L-758CINE has 17 settings.

L-758D has the same features as L-758DR except the built-in transmitter (optional)

L-758CINE has the following unique features for Video/Cine industry in addition to the L-758D features.

- ✓ Wide Range of Frame Rate from 1 to 1000 f/s
- ✓ Filter Factor Compensation (Kodak/Wratten filter name)
- ✓ Illuminance and Luminance measurement (lx, fc, cd/m2, fl)
- ✓ Aperture Scale of F0.5 to F64 in 1/3 stop increments.

The L-758 and L-478 Series light meters are designed to learn the exposure characteristic of your digital camera. By compensating for exposure and dynamic range limitations, these programmable meters can guide in capturing a perfectly exposed digital image for the ultimate in reproduction quality print or presentation.



The link between these programmable light meters and the camera is Sekonic's Data Transfer Software (DTS). The Sekonic DTS program evaluates test target images capture from your camera and creates an exposure profile of your camera's capabilities. These profiles are then transferred to either the L-758 or L-478 light meters for real time use. In addition, the DTS program offers exposure profile editing, loading and unload different profiles as well as firmware update. Custom Settings for both the L-758 and L-478 series are quick and easy through the use of the DTS program in place of making the changes in the meters.

The only light meters that show you the Dynamic Range of your D-SLR.

The dynamic Range of a digital camera can be different due to it's unique camera sensor file format (Tiff, JPEG, RAW, etc.), selected ISO and more. Knowing the limits of the digital camera (or film) is essential in exposure control. The graph below shows the Latitude or Dynamic range of a particular digital camera (or film), as well as the Clipping points (where the exposure exceeds the dynamic range of the sensor film).



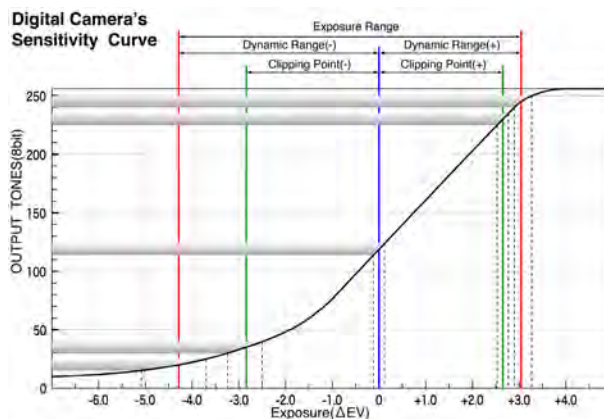
Photographed by a Camera with Narrow Exposure Range



Photographed by a Camera with Normal Exposure Range



Photographed by a Camera with Wide Exposure Range

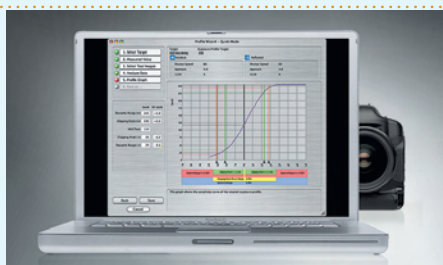


Exposure profiling



Step 1

Shoot target (Sekonic or X-Rite brand) with the equipment you use most.



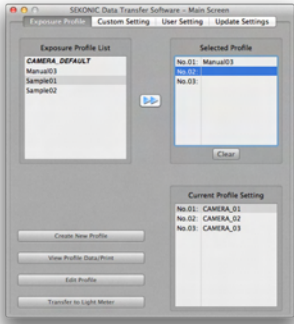
Step 2

Transfer images into your computer. If images are captured as RAW files convert them to TIFF or JPEG for analyzing. Enter ISO, incident and reflected shooting data into the Data Transfer Software and DTS will evaluate and create a graph of dynamic range and clipping points for your camera. Name and save the profile data for future use.



Step 3

Connect the meter to your MAC or PC computer and transfer the exposure profiles. Profiles can be stored and recalled at any time. Exposure latitude warnings alert you when the exposure exceeds the range of the camera.



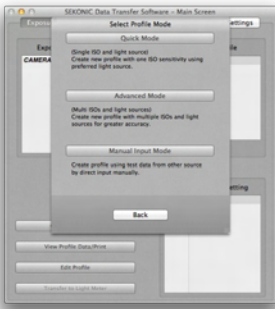
Main Screen

Display a graph of the sensitivity curve for your DSLR

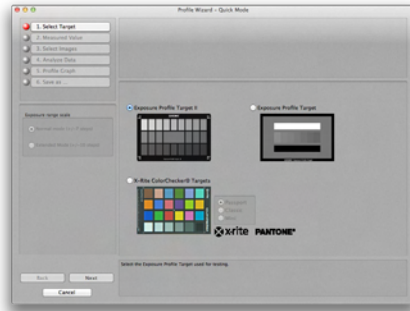
Data Transfer Software automatically analyzes the test images and displays the sensitivity curve of your camera. It also enables you to set the dynamic range and clipping point in your way, and to transfer the exposure profile data into the light meter. Additionally, it is possible to compare multiple exposure profiles on a basis of ISO sensitivity or camera.

The Wizard - The Easy way to create Exposure Profile

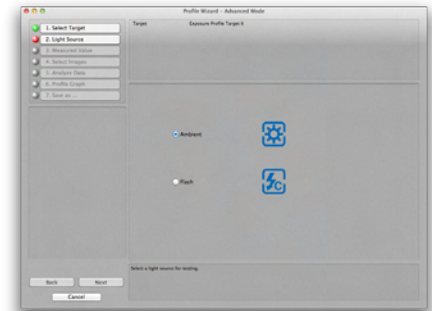
The Wizard enables you to create the exposure profile in an easy way by just following the instruction on the screen. To create a new profile, select "Quick Mode - for a fast and simple profile", "Advanced Mode - for a more precise exposure profile" or "Manual Input Mode - direct input Manually".



"Profile Mode" Selection Screen



"Select Target" Screen

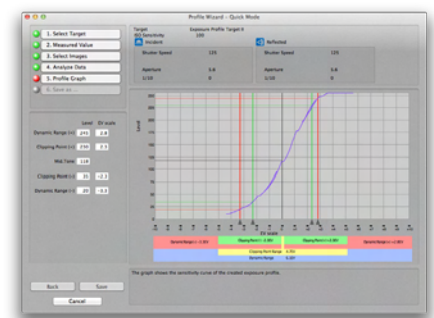


"Select Light Source" Screen

Analyze the test images automatically

A preview and Exif information are displayed when clicking a thumbnail image, so you can be free from entering the exposure value of each selected image.

Just select the necessary images and align the cross mark for the analyzing area, and then the data is automatically analyzed.



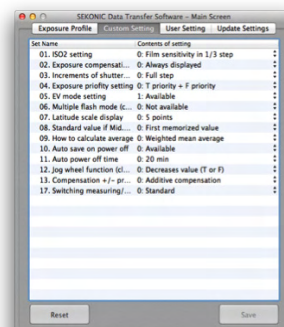
Transfer the data via USB from the computer to the light meter.

Connect the USB cable to the USB port (on the side of the light meter) and the other end to the USB port (on the computer) to transfer the computer data to the light meter. While transferring the data, the USB icon blinks on the connected light meter's screen to confirm that the data transfer is in progress and the meter and computer are correctly connected. It's also possible to transfer data from the light meter to the computer.

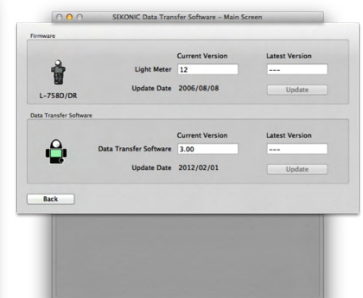


Customize your meters via Data Transfer Software

Custom Settings for both the L-758 and L-478 series are quickly and easily made through the Data Transfer Software. Both the meter's firmware and Data Transfer Software are automatically updated while DTS is connected to the internet.



Custom Setting



Update Screen

FLASHMATE L-308S

The most compact, easy-to-use, flash/ambient light meter.

The compact L-308S FLASHMATE is the smallest and lightest digital light meter in the Sekonic range. It reads ambient or flash exposures in either reflected or incident mode, it delivers accurate exposure readings in full, half, or one third step increments. Switching from reflected to incident measuring mode is fast with the built-in sliding Lumisphere. Electronic flash exposures can be taken in Cord or Cordless mode.

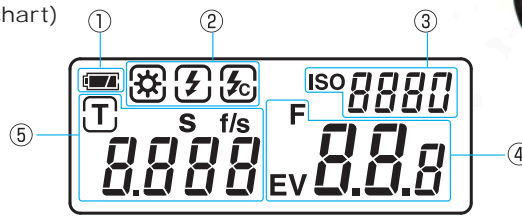
Exposure data and related information is displayed using large type and easy-to-read icons. For cinema applications, the L-308S displays from 8 to 128 frames-per-second.

Perfect Blend of Simplest and Function

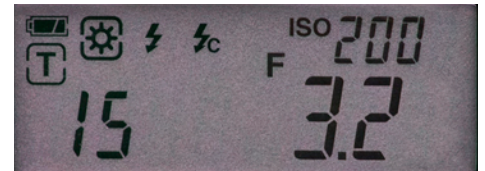
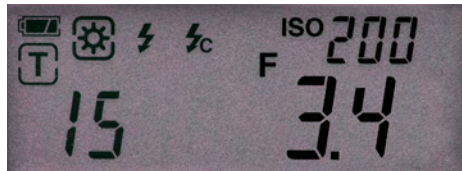
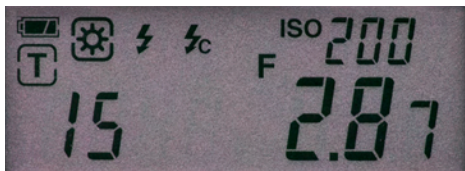
The perfect companion in the studio or on-location, the L-308S offers all the necessary functions and features to create and capture the lighting result you expect. From its intuitive operation to its compact and integrated design, the L-308S is the art of simplicity.

THE DISPLAY (Reference numbers below to chart)

- ① Battery Power Indicator
- ② Measuring Mode Icons
- ③ ISO Display
- ④ Aperture/ EV display
- ⑤ Shutter Priority Indicator, Shutter Speed Display (Still/Cine)



Aperture & Shutter Selectable in Full, Half and Third Steps



Compact, Ergonomic & Easy to Use



Switchable Reflected or Incident Light Measurement & Removable Lumidisk



Light receptor 1
(lumisphere)

Slide the mounting lumisphere to the left until it clicks to switch to incident light measurement.



Light receptor 2
(lens)

Slide the mounting lumisphere to the right until it clicks to switch to reflected light measurement.



Light receptor 3
(lumidisc)

Slide the mounting lumisphere to the right (same as if measuring reflected light), insert the lumidisk into slot of the light receiver to switch to lumidisk function mainly for flat subjects or measuring lighting contrast.

Compact, Flexible and Prefect for Digital Cine and Still Shooters

The versatility of D-SLR cameras has created a whole new breed of photo and video imaging talent among shooters today. With a turn of a dial you're shooting video from stills and back again. Keeping pace with the flexibility of these cameras, Sekonic has created the DigiCineMate L-308DC. Packed with the features you would only expect from a bigger and more expensive meter, the L-308DC deliveries in a compact, easy-to-use package.



Switchable reflected or incident light measurement and removable lumidisc



Light receptor 1 (lumisphere)
Slide the mounting lumisphere to the left until it clicks to switch to incident light measurement.



Light receptor 2 (lens)
Slide the mounting lumisphere to the right until it clicks to switch to reflected light measurement.



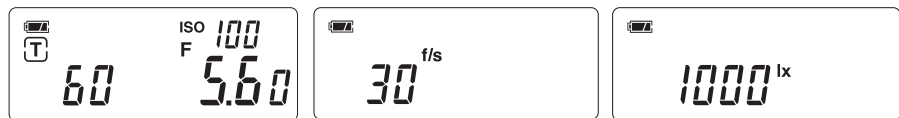
Light receptor 3 (lumidisc)
Slide the mounting lumisphere to the right (same as if measuring reflected light), insert the lumidisc into slot of the light receiver to switch to lumidisc function mainly for flat subjects or measuring lighting contrast.

Three Meters in One:

Whether your shooting is stills at a wedding, short training HD videos or producing a cinematographic documentary, the L-308DC accommodates your every changing needs. With three meters built into one you would expect it to be complicated but the L-308DC retains the simplicity of its brother the L-308S. At home with Pro shooter, it's also the ideal choice for students.

HD Cine Mode:

Perfect for today's DSLR videographers. Make exposure readings and control light using shutter speeds and frame rates and get aperture settings with one-tenth stop accuracy.



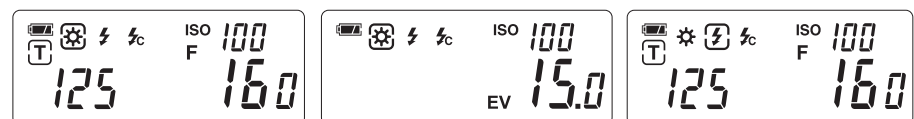
Cine Mode:

Designed for digital cinematography. Select from the most useful frame rates and shutter angles for exposure control with one-tenth stop accuracy. Lux and foot-candle readout enables quick set up of lights.



Photo Mode:

Full control for traditional still-image photographers. Shutter-priority display of a full range of ambient and flash functions including Cord and Cordless flash measurement as well as ambient EV measurement.



Calibration Compensation

Adjust the L-308DC to film or digital camera sensors or matching the L-308DC to other handheld meters.

Custom Settings

Selecting which measuring mode or increment of measurement is used can quickly be adjusted to your camera and shooting situation.

Illuminance Measurement

Lux (lx) or foot-candle (fc) display is especially useful for cinematography, theatrical and other applications that require precise control of light source brightness. Selections can be either lux, foot-candles or none within the custom setting selection screen.



The classic Sekonic L-398A has become a favorite with cinematographers around the world for over half a century. A pure analog needle and exposure dial system, the L-398 provides all exposure combinations at a single glance. And because it uses an amorphous photocell that generates its own power, there is no need for a battery. Incident measurement with its swivel head and lumisphere or lumidisc provide the lighting information necessary for lighting setups. The Sekonic L-398A Studio Deluxe III is an ideal prime or back-up meter. for still or motion picture shooters.



Measuring Functions & Features

Instant reading of aperture/shutter combinations with dial ring

It is possible to read combinations of aperture values and shutter speeds on the dial ring at one view.

Amorphous photosensor eliminates need for battery

Utilizing amorphous photosensor technology, the 6th generation L-398A continues to offer its legendary battery free operation.

Continuous measurement

With its continuous measuring ability, it allows the shooter to monitor changes in the lighting of a scene. For single measurement, the measuring button lock can be engaged.

How to Use L-398A



STEP 1

You can set ISO in ISO indicator window by rotating ISO sensitivity selector knob.



STEP 2

Pressing the measure button causes the meter needle to deflect according to brightness level. When the measuring button is released, the needle stops at a fixed position indicating the measured values.



STEP 3

Foot-candle values can be read on the foot-candle scale measurement scale. Rotate dial ring to set scale mark to match the foot-candle value on dial scale.



STEP 4

Once the foot-candle scale value has been matched with the dial scale, any of the corresponding shutter speed and aperture combinations will provide the correct exposure.

A Clip on Light Meter for both Incident & Reflected Light Measurement

The twinmate L-208 can be mounted on the camera's hot shoe using the accessory shoe mounting plate. The compact design fits nicely on classic cameras without built-in exposure meters

Measuring Functions & Features

Instant reading of aperture/shutter combinations with dial ring

It is possible to read combinations of aperture values and shutter speeds on the dial ring at one view.



Shoe Mounting on Camera

The accessory shoe is mounted using shoe mounting plate. The mounting location of the shoe mounting plate is variable; therefore mount it correctly for the camera that you are using.

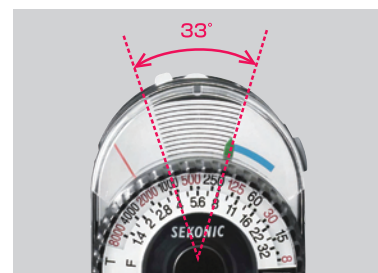


One Hand Operation

It is possible to operate with one hand by using the guide needle position retained during 15 seconds after measurement.

Selection of reflected or incident light measurement at one touch of sliding the lumisphere

Selection of reflected or incident light measurement at one touch of sliding the lumisphere. You can select reflected or incident light measurement by sliding the lumisphere until it clicks. The light receiving angle for reflected light is 33 degrees (approx. 73mm) corresponds to approx. 70% of angle for 50mm standard lens of 35mm SLR camera (approx. 46 degrees). Make measurements using the fan-shaped lines indicating 33° light receiving angle on the scale plate as a guide.



How to Use L-208



STEP 1

You can select incident or reflected measurement by sliding the lumisphere to the right or left until it clicks.



STEP 2

You can set ISO in ISO indicator by rotating ISO switch over knob on the dial ring.



STEP 3

Pressing the measure button causes the meter needle to deflect according to brightness level. When the measuring button is released, the red guide needle stops at a fixed position for 15 seconds indicating the measured values.



STEP 4

Rotate dial ring to align the green match needle with the red guide needle. Any of the corresponding shutter speed and aperture combinations will provide the correct exposure.

ILLUMINOMETER i-346

Simple, versatile & easy to use, the Illuminometer i-346 monitors illumination levels incrementally wherever you need

The i-346 is an easy-to-use illuminance meter, with a long history in light measurement technology and the design of quality exposure meters. Readings can be made in three different modes: single, continuous, or delayed up to 60 seconds. The large readout can be customized to display in either lux (lx) or foot-candle (fc) increments.



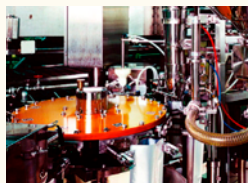
Measuring functions & features

- ✓ Continuous measuring mode and Single measuring mode
- ✓ Timer function (in Single measuring mode only) --- 1 to 60 sec.
- ✓ Selectable LUX/FC display
- ✓ Movie/TV: Control dramatic lighting



Customer & Application:

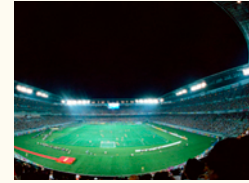
- ✓ Industry: Work Place Illumination
- ✓ Government: Health Standards
- ✓ Police: Safety
- ✓ Sports: Conform to standards
- ✓ Museum/Gallery: Display Illumination
- ✓ Agriculture: Regulate light for best growing
- ✓ Movie/TV: Control dramatic lighting



Industrial



Office



Stadium

Specification Chart

Type	Digital illuminometer for ambient light
Light receptor element	Silicon photo diode
Light source measured	Ambient light
Measuring method	Incident light only (fixed lumidisc)
Measurement cycle	0.5 seconds
Measurement range	2.50 lx to 200,000 lx 0.23 fc to 18,600 fc
Display	Unit: Lux (lx), Foot-candle (fc) Significant digits : 3 digits
Linearity	+/-5% (23 +/-2 °C)
Other functions	Out of measurement range : UNDER or OVER warning display Battery power indicator display Automatic power off function (about 4 minutes after last operation)
Battery used	AA battery 1.5V x 1 (alkaline, manganese, lithium, NiMH)
Operating temperature	0 to 40°C
Storage temperature	-20 to 60°C
Dimensions	63(W) x 110(H) x 22(D) mm
Weight	95g
Standard accessory	Soft case

Step-up ring for L-758 Series (30.5 - 40.5mm):

The step-up ring, available as an optional accessory, makes it possible to mount step rings and filters of other manufacturers. This simplifies the setting of exposure without the troublesome correction calculation of PL filters, etc. The step-up ring can also be used as a hood to protect lenses from scratching, soiling, etc.



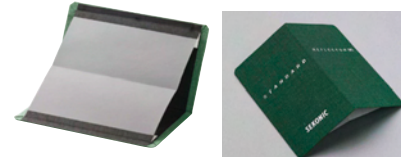
Slide Set for L-398 Series:

A total of 11 slides are available, for direct reading of aperture on Foot-Candle scale in incident measurement.



18% Standard Gray Card:

18% gray card with cover folds and fits in a shirt pocket. It provides accurate exposures regardless of reflectance ratio of the subject and surroundings.



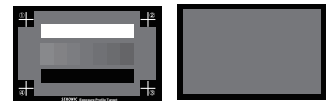
Synchro Cord:

This is a five-meter long cord with three plugs to connect with flash, light meter and camera. Cord has two male connectors and one female one. One of the male connectors has the lock function not to easily come off.



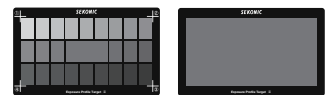
Exposure Profile Target:

This is more economical test target used to create camera exposure profiles. One side is nine gray patches including black and white, and the other side is an 18% gray card for digital camera white balancing and spot metering.



Exposure Profile Target II:

This is the test target used to create camera exposure profiles. One side consists of a central 18% gray patch that is surrounded by 25 patches arranged in 1/6th stop values, while the other side is 18% gray card for digital camera white balancing and spot metering.



Radio Transmitter RT-32CTL for L-758 Series and L-358:

Sekonic RT-32CTL Radio Transmitter Module provides compatibility with the PocketWizard ControlITL channels in addition to the original Standard triggering channels.

Compatible with both FCC (USA) and CE (Europe) frequencies, the new RT-32CTL Radio Transmitter module can be used in Sekonic wireless-ready meters: L-358 and L-758 Series.



5 Degree Viewfinder for L-478 Series:

For accurate, reflected light, spot measurements of specific subject areas. It is useful for distant objects such as landscapes or for metering subjects that generate light (neon signs, etc.), highly reflective surfaces or translucent subjects (stained glass, etc.).



Deluxe Case for L-478 Series:

The Deluxe Case for the L-478 series provides a stylish way to transport the meter and a convenient way to store the optional 5-degree viewfinder. Padded front and back panels provide excellent protection. Front pouch with hook-and-loop closure is provided to store the meter's optional 5-degree viewfinder or lumisphere when not in use.



Specification and Comparison Chart



Product Name and Model:			DIGITALMASTER L-758CINE	DIGITALMASTER L-758DR	DIGITALMASTER L-758D
Type			Digital light meter for ambient and flash light	Digital light meter for ambient and flash light	Digital light meter for ambient and flash light
Light Receptor	Incident Light	Swivel Head	Horizontal (270 degrees)	Horizontal (270 degrees)	Horizontal (270 degrees)
		Lumidisc	Retractable	Retractable	Retractable
	Reflected Light	Switching Incident/Reflected	Rotate	Rotate	Rotate
		Light Receiving Angle	1 degree (built-in)	1degree(built-in)	1degree(built-in)
Measuring Mode	Ambient Light	Viewfinder(Optional)	No	No	No
		Aperture Priority	Yes	Yes	Yes
		Shutter Speed Priority	Yes	Yes	Yes
		TF Priority	No	No	No
		EV Mode	Yes	Yes	Yes
		CINE (shutter angle, frame rate)	Yes	No	No
		HD Cine (frame rate)	Yes	Yes	Yes
		Illuminance (lx or fc)	Yes	No	No
	Luminance (cd/m ² or fl)	Yes	No	No	
	Flash Light	Multiple (cumulative) Flash Mode	Yes (unlimited)	Yes (unlimited)	Yes (unlimited)
		Cordless/Cord-In Mode	Yes	Yes	Yes
		Radio Triggering	Yes (Optional)	Yes (Built-in)	Yes (Optional)
		EV	EV-2 to EV 22.9	EV-2 to EV 22.9	EV-2 to EV 22.9
EV		EV 1 to EV 24.4	EV 1 to EV 24.4	EV 1 to EV 24.4	
Measuring Range (ISO100)	Ambient	Incident	EV	EV-2 to EV 22.9	EV-2 to EV 22.9
		Reflected	EV	EV 1 to EV 24.4	EV 1 to EV 24.4
		Option VF 5 deg	EV	No	No
		Illuminance	LUX	0.63 to 190,000 lux	No
			FC (Foot-Candle)	0.10 to 180,000 fc	No
			Cd/m ²	0.25 to 190,000 cd/m ²	No
	Flash	Incident	F	F0.5 to F161.2(=128.9)	F0.5 to F161.2(=128.9)
		Reflected	F	F2.0 to F161.2(=128.9)	F2.0 to F161.2(=128.9)
		Option VF 5 deg.	F	No	No
			F	No	No
Display	ISO Sensitivity	ISO	ISO 3 to 8000 (in 1/3 steps)	ISO 3 to 8000 (in 1/3 steps)	
	Ambient	Aperture	F	F0.5 to F161.2(=128.9)	F0.5 to F161.2(=128.9)
		Shutter Speed	T	30 min. to 1/8000 sec 1/200, 1/400	30 min. to 1/8000 sec 1/200, 1/400
		Frame Rate	f/s	1 to 1000f/s (43 settings)	2 to 360f/s (28 settings)
		Shutter Angle	Degrees	1 to 270 plus 12, 17, 22,144, 172 deg.	No
		EV	EV	EV -9.9 to 46.6 (1/10 steps)	EV -9.9 to 46.6 (1/10 steps)
	Flash	Aperture	F	F0.5 to F161.2(=128.9)	F0.5 to F161.2(=128.9)
		Shutter Speed	T	30 min. to 1/1000 sec. 1/75, 1/80, 1/90, 1/100, 1/200, 1/400	30 min. to 1/1000 sec. 1/75, 1/80, 1/90, 1/100, 1/200, 1/400
	Features/Functions		Average	Yes	Yes
			Flash Analyzing	Yes (in 10% step)	Yes (in 10% step)
		Memory	Yes (9 times) both incident and spot	Yes (9 times) both incident and spot	
		Contrast Function	Yes (±9.9 EV in 1/10 step)	Yes (±9.9 EV in 1/10 step)	
		Filter Compensation	Yes(-5.0 to 5.0EV)	Yes(-5.0 to 5.0EV)	
		Filter Factor Number Compensation	Yes(preset 7 types)	No	
		Exposure Compensation	Yes(-9.9 to+9.9)	Yes(-9.9 to+9.9)	
		Calibration Compensation	Yes(-1.0 to +1.0)	Yes(-1.0 to +1.0)	
		Exposure Profile	Yes	Yes	
		Custom Settings	Yes (17 items)	Yes (14 items)	
		LCD Backlight	Yes	Yes	
		All Weather Design	Yes	Yes	
		Running (setting) Lock	Yes	Yes	
		How to Change Setting	Jog Wheel	Jog Wheel	
		Dioptr Adjustment	Yes (-1 to 2.5D)	Yes (-1 to 2.5D)	
	Tripod Socket	Yes	Yes		
Operating Temperature Range			-10 to 50°C	-10 to 50°C	
Battery Used			1 x CR123A battery 3.0V(lithium dry cell)	1 x CR123A battery 3.0V(lithium dry cell)	
Weight			268g	268g	
Dimensions (W x H x D mm)			90 x 170 x 48	90 x 170 x 48	

* All trademarks, company and product names, are the property of their respective owners.

* Features and specifications are subject to change without notice.



LITEMASTER PRO L-478DR	LIGHTMASTER PRO L-478D	DIGICINEMATE L-308DC	FLASHMATE L-308S	STUDIO DELUXE III L-398A	TWINMATE L208
Digital light meter for ambient and flash light	Digital light meter for ambient and flash light	Digital light meter for ambient and flash light	Digital light meter for ambient and flash light	Analog light meter for ambient light	Analog light meter for ambient light
Horizontal (270 degrees)	Horizontal (270 degrees)	Fixed	Fixed	Horizontal (300 degrees)	Fixed
Retractable	Retractable	Removable	Removable	Removable	No
Removable	Removable	Slide	Slide	Removable	Slide
No	No	40° (Built-in lens)	40° (Built-in lens)	30° (Lumagrad)	33°
VF 5°	VF 5°	No	No	No	No
Yes	Yes	No	No	Yes	Yes
Yes	Yes	Yes	Yes	Yes	Yes
Yes	Yes	No	No	No	No
Yes	Yes	Yes	Yes	Yes	Yes
Yes	Yes	Yes	No	No	No
Yes	Yes	Yes	Yes	Yes (fc only)	No
Yes	Yes	Yes	No	No	No
Yes (99 times)	Yes (99 times)	No	No	No	No
Yes	Yes	Yes	Yes	No	No
Yes (Built-in)	No	No	No	No	No
EV-2 to EV 22.9	EV-2 to EV 22.9	EV0 to EV 19.9	EV0 to EV 19.9	EV 4 to EV 17	EV 3 to EV 17
No	No	EV0 to EV 19.9	EV0 to EV 19.9	EV 9 to EV 17	EV 3 to EV 17
EV 3 to EV 22.9	EV 3 to EV 22.9	No	No	No	No
0.63 to 2,000,000 lx	0.63 to 2,000,000 lx	2.50 to 190,000 lx	No	No	No
0.10 to 180,000 fc	0.10 to 180,000 fc	0.23 to 17,000 fc	No	0 to 1,250 fc (scale)	No
1.0 to 980,000cd/m ²	1.0 to 980,000cd/m ²	No	No	No	No
0.29 to 290,000 fl	0.29 to 290,000 fl	No	No	No	No
F1.0 to F161.2(=128.9)	F1.0 to F161.2(=128.9)	F1.0 to F90.9	F1.4 to F90.9	No	No
No	No	F1.0 to F90.9	F1.4 to F90.9	No	No
F2.8 to F161.2(=128.9)	F2.8 to F161.2(=128.9)	No	No	No	No
ISO 3 to 409,600 (in 1/3 steps)	ISO 3 to 409,600 (in 1/3 steps)	ISO 3 to 8,000 (in 1/3 steps)	ISO 3 to 8,000 (in 1/3 steps)	ISO 6 to 12,000 (in 1/3 steps)	ISO 12 to 12,500 (in 1/3 steps)
F0.5 to F161.2(=128.9)	F0.5 to F161.2(=128.9)	F0.5 to F90.9	F0.5 to F90.9	F0.7 to F128	F1.4 to F32
30 min. to 1/64,000 sec	30 min. to 1/64,000 sec		60 sec. to 1/8,000 sec.	60 sec. to 1/8,000 sec.	30 sec. to 1/8,000 sec.
1 to 1,000f/s (editable)	1 to 1,000f/s (editable)	8 to 128f/s (17 settings)	8 to 128f/s (10 settings)	8 to 128f/s (5 settings)	No
1 to 358 deg. plus other 20 settings	1 to 358 deg. plus other 20 settings	45, 90, 180, 270, 360 deg.	No	No	No
EV -27.9 to EV 55.8 (1/10 steps)	EV -27.9 to EV 55.8 (1/10 steps)	EV -6 to 27.2 (1/10 steps)	EV -5 to 26.2 (1/10 steps)	EV1 to 20 (1/3 steps)	EV3 to 17 (1/2 steps)
F0.5 to F161	F0.5 to F161	F0.5 to F90.9	F0.5 to F90.9	No	No
30 min. to 1/1000 sec. 1/75, 1/80, 1/90, 1/100, 1/200, 1/400	30 min. to 1/1000 sec. 1/75, 1/80, 1/90, 1/100, 1/200, 1/400	1 sec. to 1/500 sed. 1/75, 1/80, 1/90, 1/100	1 sec. to 1/500 sed. 1/75, 1/80, 1/90, 1/100	No	No
Yes	Yes	No	No	No	No
Yes (in 10% step)	Yes (in 10% step)	No	No	No	No
Yes (9 times)	Yes (9 times)	No	No	Yes (1 memory with indicator)	No
Yes (±9.9 EV in 1/10 step)	Yes (±9.9 EV in 1/10 step)	No	No	No	No
Yes(-5.0 to 5.0EV)	Yes(-5.0 to 5.0EV)	No	No	No	No
Yes (preset 24 types plus 6 settings)	Yes (preset 24 types plus 6 settings)	No	No	No	No
Yes(-9.9 to +9.9)	Yes(-9.9 to +9.9)	No	No	No	No
Yes(-1.0 to +1.0)	Yes(-1.0 to +1.0)	Yes(-1.0 to +1.0)	No	No	No
Yes	Yes	No	No	No	No
Yes (13 items)	Yes (13 items)	Yes	Yes	No	No
Yes	Yes	No	No	No	No
No	No	No	No	No	No
Yes	Yes	No	No	No	No
Touch Panel operation	Touch Panel operation	Up/Down Key	Up/Down Key	Dial Ring	Dial Ring
No	No	No	No	No	No
No	No	No	No	No	No
-10 to 50°C	-10 to 50°C	0 to 40°C	0 to 40°C	0 to 40°C	0 to 40°C
AAA Batteries 1.5V x 2	AAA Batteries 1.5V x 2	AA Batteries 1.5V x 1	AA Batteries 1.5V x 1	No Battery (amorphous sensor)	CR2032 lithium battery 3.0V x 1
140g	130g	95g	95g	190g	45g
57 x 140 x 26	57 x 140 x 26	63 x 110 x 22	63 x 110 x 22	58 x 112 x 34	45 x 65 x 24

SEKONIC

SEKONIC CORPORATION

7-24-14, Oizumi-Gakuen-Cho,
Nerima-Ku, Tokyo 178-8686, Japan

TEL: +81-3-3978-2335
FAX: +81-3-3978-5229
<http://www.sekonic.com>

Catalog No.: C1481150

Printed in Japan