



ZEISS Classic Lenses

Manual focus SLR lenses for
ZE and ZF.2 mount cameras.



We make it visible.

The moment when pictures
write history.

The Classic Lenses from ZEISS.

When pictures write history, there are three reasons: the uniqueness of the moment, the photographer who has instinctively captured the image at precisely the right moment, and the technical equipment that helps the photographer realize his or her ambitions.

The experts put their trust in ZEISS optics in the missions to the moon. What better proof could there be that reliable equipment is an absolute must to capture those unforgettable, one-and-only moments?



ZEISS Distagon 4/40
on the Hasselblad 500 EL
moon camera





Where would that **perfect moment** be without **reliable optics to capture it?**

ZEISS Planar T* 1.4/85
Classic lens



**Too good to be true?
Not with ZEISS optics.**

When the first astronauts set foot on the moon and took these breathtaking photos, they had to overcome major challenges: the sun in the background, the many different shades of gray on the moon's surface and the absence of a second light source – a real balancing act was needed between under- and overexposure, motion blur and camera shake.

The solution: the ZEISS Planar 2.8/80 lens on the Hasselblad moon camera. Despite high contrast in the surrounding area the high-speed lens was even able to capture the shadow of the astronaut. The highly reflective Teflon coating of the photographer's spacesuit probably acted as an optical brightener. This picture served as "proof" of the moon landing and is one of the world's most iconic images.

ZEISS Classic Lenses

All properties at a glance

Excellent workmanship, fast apertures and legendary bokeh – these are the outstanding features of the ZEISS Classic lenses.

Unlike standard autofocus lenses, they offer highly precise, intuitive manual focus. And, of course, they support all other automatic functions found in standard lenses.

Proven image quality

- T*® antireflective coating from ZEISS
- Advanced stray light reduction
- Almost circular aperture with nine blades enables an exceptionally harmonious bokeh
- Uniform standardized color characteristics throughout all focal lengths
- Optimal distortion correction for all focal lengths

Intuitive, exact image control

- Extremely accurate manual focusing for high-precision photography
- 1/2 f-stop intervals with easy-to-feel lock-in positions and exact photometric graduation in ZF.2 lenses

High-quality workmanship

- Robust, all-metal design for many years of use
- Durable front ring with filter thread and outer bayonet for lens shade (part of standard package)

ZEISS Classic Lenses

Precision every time

The ZEISS Classic Lenses were developed **for ambitious photographers** and their wide diversity of applications: macro, landscape, architecture, portrait, journalism, fashion and beauty. Thanks to their excellent value for the money, the ZEISS Classic Lenses offer an excellent entry into premium class photography.

The large number of focal lengths and optical designs extend from specialized fields of application with, for example, the ZEISS Distagon T* 2.8/15 super wide-angle lens to the moderate ZEISS Apo Sonnar T* 2/135 tele lens.





When that special moment
meets technical perfection

Photo: Johannes Krebs | ZEISS Distagon T* 2.8/15

ZEISS Distagon T* 2.8/15



ZEISS Distagon T* 2.8/15

Infinitely wide

The super wide angle with a field angle of 110° ensures outstanding image quality, even at full aperture, and exceptionally low distortion. The front lens can be optimally protected by a 95 mm filter.



Specifications

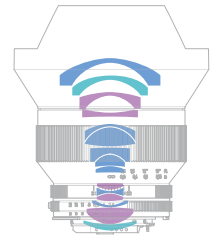
Focal length	15 mm
Aperture range	f/2.8–f/22
Elements/groups	15/12
Focusing range	0.25 m–∞
Field angle* (diag./horiz./vert.)	110/100/76°
Coverage	34 x 22.1 cm (at close range)
Compatible with	Canon or Nikon SLR/DSLR cameras**

*Based on 35 mm format

**Nikon is a registered trademark of Nikon Corporation. Canon is a trademark or registered trademark of Canon Inc. and/or other members of the Canon Group.

Design

- Distagon® with 15 elements in 12 groups
- Lens with aspheric optical surface
- Lens made of special glass with anomalous partial dispersion
- “Floating Elements” design



When you gain a new
perspective on nature



Photo: Gregor Halbweid | ZEISS Distagon T* 3.5/18

ZEISS Distagon T* 3.5/18



ZEISS Distagon T* 3.5/18

New viewing angles

The compact super wide angle lens is ideal for landscape and architectural photography and enables creative photography with unusual perspectives. It offers impressive imagery across the entire image field.



Specifications

Focal length	18 mm
Aperture range	f/3.5 – f/22
Elements/groups	13/11
Focusing range	0.3 m – ∞
Field angle* (diag./horiz./vert.)	99/90/67°
Coverage	44 x 29 cm (at close range)
Compatible with	Canon or Nikon SLR/DSLR cameras**

*Based on 35 mm format

**Nikon is a registered trademark of Nikon Corporation. Canon is a trademark or registered trademark of Canon Inc. and/or other members of the Canon Group.

Design

- Distagon with 13 elements in 11 groups
- Lens made of special glass with anomalous partial dispersion
- “Floating Elements” design





When inspiration
becomes creativity

Photo: Timm Allrich | ZEISS Distagon T* 2/25

ZEISS Distagon T* 2/25



ZEISS Distagon T* 2/25

High speed

The wide angle of view together with a fast aperture allows fascinating perspectives. Take landscape, architecture or journalistic pictures with sharp contrast edges and unrivaled detail, even without a tripod.



Specifications

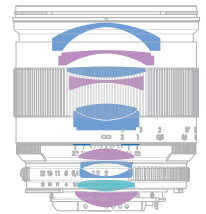
Focal length	25 mm
Aperture range	f/2–f/22
Elements/groups	11/10
Focusing range	0.25 m–∞
Field angle* (diag./horiz./vert.)	81/71/51°
Coverage	21.9 x 14.4 cm (at close range)
Compatible with	Canon or Nikon SLR/DSLR cameras**

*Based on 35 mm format

**Nikon is a registered trademark of Nikon Corporation. Canon is a trademark or registered trademark of Canon Inc. and/or other members of the Canon Group.

Design

- Distagon with 11 elements in 10 groups
- Lens with aspheric optical surface
- Lens made of special glass with anomalous partial dispersion
- “Floating Elements” design





When depth gains a totally
new dimension

Photo: Armin Tima | ZEISS Distagon T* 2.8/25 ZF.2

ZEISS Distagon T* 2.8/25



ZEISS Distagon T* 2.8/25

Near meets far

The exceptionally wide angle lens with a short close-focusing distance offers completely new perspectives which are simply not possible with standard macro lenses. It is almost completely free from reflection and stray light and provides smooth, creamy bokeh.



Specifications

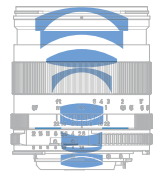
Focal length	25 mm
Aperture range	f/2.8–f/22
Elements/groups	10/8
Focusing range	0.17 m–∞
Field angle* (diag./horiz./vert.)	80/70/50°
Coverage	8.3 x 5.5 cm (at close range)
Compatible with	Nikon SLR/DSLR cameras**

*Based on 35 mm format

**Nikon is a registered trademark of Nikon Corporation. Canon is a trademark or registered trademark of Canon Inc. and/or other members of the Canon Group.

Design

- Distagon with 10 elements in 8 groups



When architecture
is reinterpreted



Photo: Alfredo Biot | ZEISS Distagon T* 2/28

ZEISS Distagon T* 2/28



ZEISS Distagon T* 2/28

Light in the dark

High-speed and compact fixed focal length for difficult lighting. Optimized against stray light and reflection. The combination of focal length and fast aperture makes it suitable for a broad spectrum of applications.



Specifications

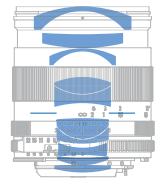
Focal length	28 mm
Aperture range	f/2–f/22
Elements/groups	10/8
Focusing range	0.24 m–∞
Field angle* (diag./horiz./vert.)	74/65/45°
Coverage	18 x 12 cm (at close range)
Compatible with	Canon or Nikon SLR/DSLR cameras**

*Based on 35 mm format

**Nikon is a registered trademark of Nikon Corporation. Canon is a trademark or registered trademark of Canon Inc. and/or other members of the Canon Group.

Design

- Distagon with 10 elements in 8 groups
- “Floating Elements” design





When the details
take center stage

Photo: Richard Schleuning | ZEISS Distagon T* 1.4/35

ZEISS Distagon T* 1.4/35



ZEISS Distagon T* 1.4/35

Wide-angled bokeh

Use the in- and out-of-focus effects and the exceptional bokeh created by this lens to obtain the optimal effect. Through high image quality even at full aperture, the details of the main subject can be imaged to perfection.



Specifications

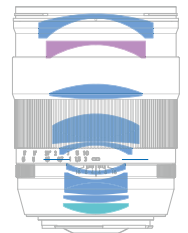
Focal length	35 mm
Aperture range	f/1.4 – f/16
Elements/groups	11/9
Focusing range	0.30 m – ∞
Field angle* (diag./horiz./vert.)	63/54/37°
Coverage	18 x 12 cm (at close range)
Compatible with	Canon or Nikon SLR/DSLR cameras**

*Based on 35 mm format

**Nikon is a registered trademark of Nikon Corporation. Canon is a trademark or registered trademark of Canon Inc. and/or other members of the Canon Group.

Design

- Distagon with 11 elements in 9 groups
- Lens with aspheric optical surface
- Lens made of special glass with anomalous partial dispersion
- “Floating Elements” design





When special moments
become little stories

Photo: Michael Wartmann | ZEISS Planar T* 1.4/50

ZEISS Planar T* 1.4/50



ZEISS Planar T* 1.4/50

Natural brilliance

Standard focal length with the perspective of the human eye. The fast aperture and exceptional compactness are its outstanding features. Ensures exciting photography with outstanding imagery. The ultimate addition to your camera bag.



Specifications

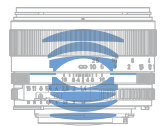
Focal length	50 mm
Aperture range	f/1.4 – f/16
Elements/groups	7/6
Focusing range	0.45 m – ∞
Field angle* (diag./horiz./vert.)	45/38/26°
Coverage	24 x 16 cm (at close range)
Compatible with	Canon or Nikon SLR/DSLR cameras**

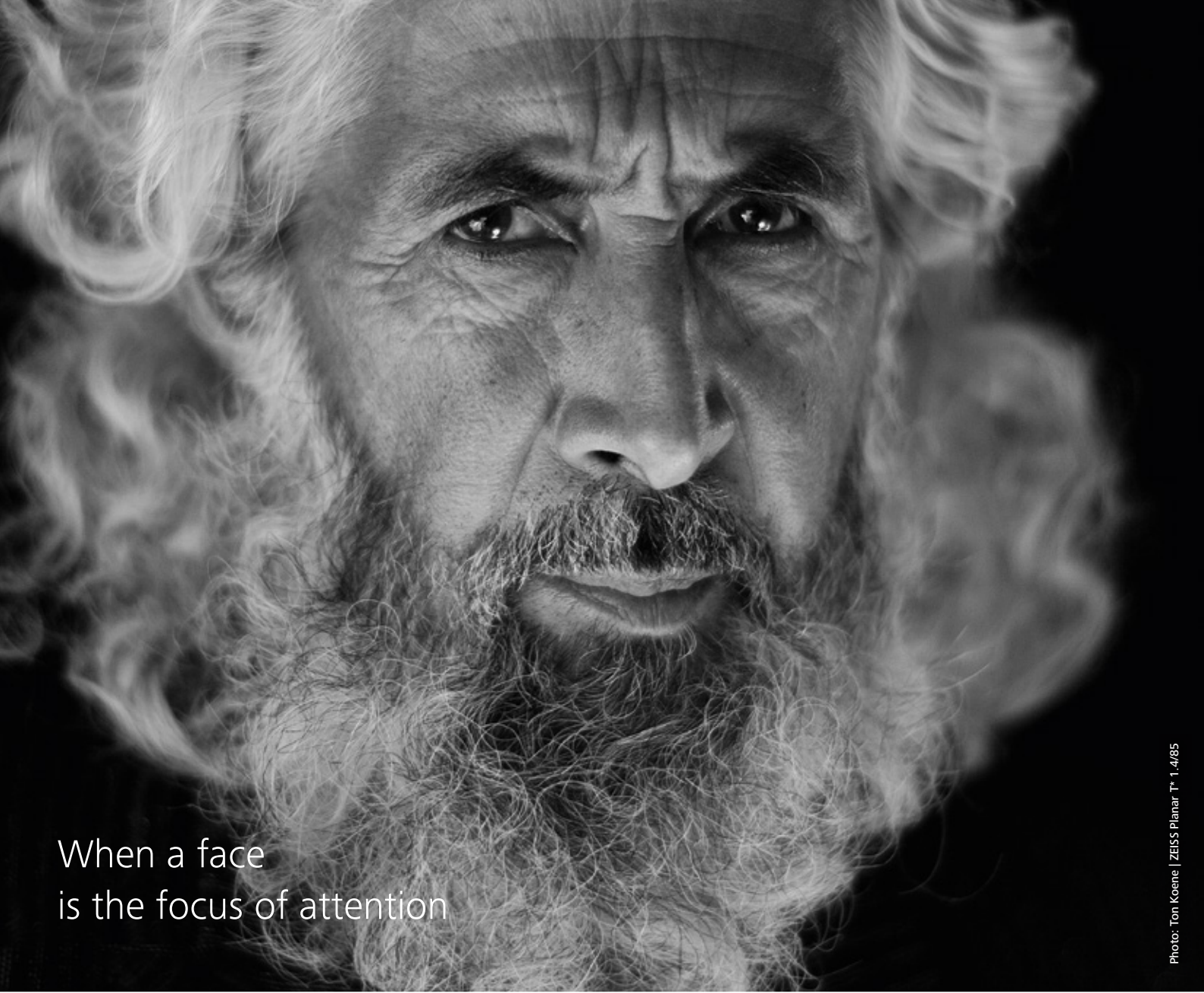
*Based on 35 mm format

**Nikon is a registered trademark of Nikon Corporation. Canon is a trademark or registered trademark of Canon Inc. and/or other members of the Canon Group.

Design

- Planar® with 7 elements in 6 groups





When a face
is the focus of attention

Photo: Ton Koene | ZEISS Planar T* 1.4/85

ZEISS Planar T* 1.4/85



ZEISS Planar T* 1.4/85

The character in focus

As a classic focal length for portraits, this high-speed tele lens concentrates on the essentials. Its shallow depth of field makes it suitable for isolating the main subject from the foreground and background.



Specifications

Focal length	85 mm
Aperture range	f/1.4–f/16
Elements/groups	6/5
Focusing range	1 m–∞
Field angle* (diag./horiz./vert.)	29/24/16°
Coverage	36 x 24 cm (at close range)
Compatible with	Canon or Nikon SLR/DSLR cameras**

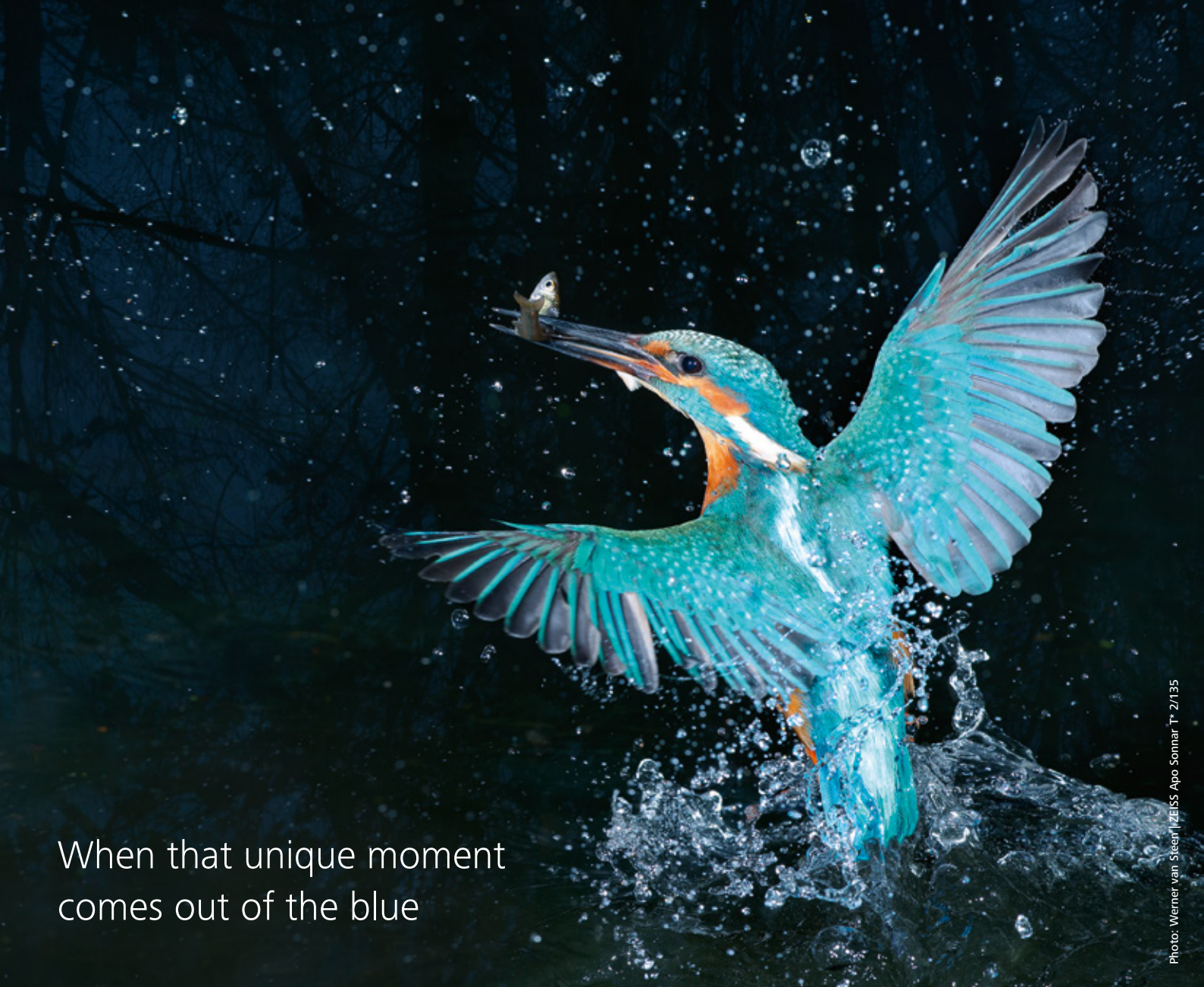
*Based on 35 mm format

**Nikon is a registered trademark of Nikon Corporation. Canon is a trademark or registered trademark of Canon Inc. and/or other members of the Canon Group.

Design

- Planar with 6 elements in 5 groups





When that unique moment
comes out of the blue

Photo: Werner van Steen | ZEISS Apo Sonnar T* 2/135

ZEISS Apo Sonnar T* 2/135



ZEISS Apo Sonnar T* 2/135

So close but yet so far

The high-speed tele lens excels with its superb color correction and rendition. Thanks to its large aperture and smooth bokeh, it is perfect for medium distance portrait photography. Its short closest focusing distance also extends its versatility.



Specifications

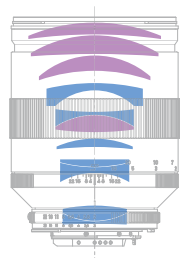
Focal length	135 mm
Aperture range	f/2.0–f/22
Elements/groups	11/8
Focusing range	0.80 m–∞
Field angle* (diag./horiz./vert.)	18.7/15.6/10.5°
Coverage	14.5 x 9.6 cm (at close range)
Compatible with	Canon or Nikon SLR/DSLR cameras**

*Based on 35 mm format

**Nikon is a registered trademark of Nikon Corporation. Canon is a trademark or registered trademark of Canon Inc. and/or other members of the Canon Group.

Design

- Apo Sonnar® with 11 elements in 8 groups
- Lens made of special glass with anomalous partial dispersion
- “Floating Elements” design



Specifications

ZEISS Classic Lenses



2.8/15



3.5/18



2/25



2.8/25



2/28



1.4/35



1.4/50



1.4/85



2/135

	Length* (with caps)	Diameter* (max.)	Weight*	Filter thread	ZE	ZF.2
Super-wide angle						
Distagon T* 2.8/15	132–135 mm	103 mm	730–820 g	M 95 x 1.0	■	■
Distagon T* 3.5/18	84–85 mm	87 mm	470–510 g	M 82 x 0.75	■	■
Wide angle						
Distagon T* 2/25	95–98 mm	71–73 mm	570–600 g	M 67 x 0.75	■	■
Distagon T* 2.8/25	90 mm	64 mm	460 g	M 58 x 0.75		■
Distagon T* 2/28	93–96 mm	64–72.4 mm	500–580 g	M 58 x 0.75	■	■
Distagon T* 1.4/35	120–122 mm	78 mm	830–850 g	M 72 x 0.75	■	■
Standard						
Planar T* 1.4/50	69–71 mm	66–71 mm	330–380 g	M 58 x 0.75	■	■
Tele						
Planar T* 1.4/85	85–88 mm	77–78 mm	570–670 g	M 72 x 0.75	■	■
Apo Sonnar T* 2/135	128–130 mm	84 mm	920–930 g	M 77 x 0.75	■	■

*Dimensions and weight may vary according to the camera mount.

You can find further information on technical data and compatibility at www.zeiss.com/photo

ZEISS SLR lenses

Overview of the lens families with high-precision manual focus for ZE and ZF.2 mount cameras.



ZEISS Otus

The world's best ZEISS SLR lenses

The Otus lenses from ZEISS deliver uncompromising performance, even at full aperture. They are specially designed for modern DSLR cameras with high-resolution sensors. The Otus lenses from ZEISS on these cameras offer the standard of quality otherwise only achieved on medium format systems.

www.zeiss.com/otus

ZEISS Milvus

The new SLR lenses from ZEISS

The Milvus lenses from ZEISS will impress you with their constantly excellent image performance across all focal lengths – regardless of whether they are used for portrait, landscape, event or other types of photography. They are optimized for high-resolution DSLR cameras.

www.zeiss.com/milvus



ZEISS Classic

The Classic ZEISS lenses – proven for many years.

The Classic lenses from ZEISS have enjoyed an outstanding reputation with photographers all over the world for many years now – and rightly so. This lens family is characterized by its classic appearance and high optical performance.

www.zeiss.com/classic





Photo: Werner van Steen | ZEISS Distagon T* 2.8/15

Share fascination and experience

Become a part of the ZEISS Community

Visit ZEISS on the Internet to keep in contact with other photographers, exchange tips and tricks and get regular news updates. On our blog and on Facebook, Twitter, Flickr and Vimeo, you can find a large community of photographers and video makers from all over the world. We look forward to welcoming you.



zeiss.com/photo/social



Experience the ZEISS Classic Lenses at your camera dealer:
[**zeiss.com/photo/dealer**](http://zeiss.com/photo/dealer)

See our blog for exciting everyday stories from outstanding photographers and discover how they rise to the many challenges they encounter by using ZEISS lenses:

[**zeiss.com/clnblog**](http://zeiss.com/clnblog)



Carl Zeiss AG

Camera Lenses
73446 Oberkochen
Germany

Phone: +49 7364 20-6175
Fax: +49 7364 20-4045
Email: photo@zeiss.com

www.zeiss.com/photo

EN_10_025_0009I Printed in Germany ZIG-CZ-IX/2015 No
Subject to change in design and scope of delivery and as a result of ongoing technical development.